

Phoenix-Goodyear Airport North Federal Superfund Site Remediation

Maricopa County, Arizona

CLIENT

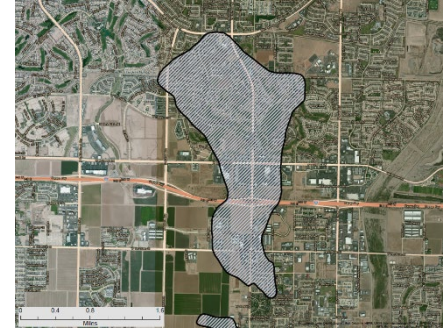
City of Avondale and
City of Litchfield Park

HIGHLIGHTS

- EPA Superfund Site
- Contaminants of concern: VOCs, TCE, PCE
- Ensure implementation of necessary remedial actions

The Phoenix-Goodyear Airport (PGA-North) Superfund Site is an area of volatile organic compound (VOC) impacted groundwater that extends for several miles. The observed contaminants are primarily tetrachloroethane (TCE) and perchlorate (PCE). Groundwater impacts are observed in an alluvial aquifer.

Clear Creek supports both the Cities in assessing the ongoing groundwater investigations at the PGA-North Superfund Site and ensures the necessary remedial actions are implemented to protect the Cities' water resources. The site is an area of groundwater that has been impacted by historical releases of the industrial solvent TCE.



Clear Creek reviews site activities on behalf of the Cities to ensure that the proposed remediation remains effective.

The historical groundwater remedies that were implemented were not successful in preventing the plume of groundwater contamination from migrating to the north and northeast, threatening existing City supply wells and valuable groundwater resources. As a result of concerns raised by Clear Creek on behalf of the Cities, the party responsible for remediating the site was required by the U.S. Environmental Protection Agency (EPA) to implement a new groundwater remediation plan.

To date, this expanded groundwater remedy has included sealing conduit wells that were spreading the contamination vertically from the shallow aquifer to the deeper aquifer used by the City, and the installation of multiple new extraction and injection wells to hydraulically contain the plume. As a result, the northern and eastern migration of the plume has been contained before it crossed into City borders, and critical City supply wells are protected. Clear Creek continues to represent the Cities in reviewing site activities to ensure that the proposed remediation remains effective and evaluate plans to enhance and optimize the groundwater remedy north of I-10 and the proposed remedial alternatives presented in a Focused Feasibility Study to address the source area at the former Unidynamics property.